

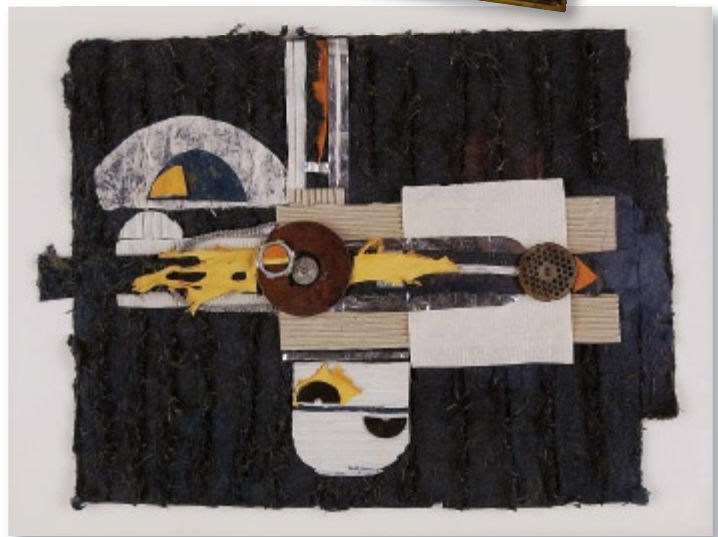
# Betty Beam

I started painting portraits in oil some thirty years ago. Becoming bored looking at strange human faces on canvas for a few years, I switched to watercolor. A few of us in the group wanted to experiment using mixed media and collage along with watercolor. We started out meeting in Eve Jordon's garage. Eve is no longer with us, but she was our leader and inspiration. Out of this experimental group, the Collage Artists of America was born along with LA Experimental Artists.

LAEA meet once a month at VIVA and one member takes a turn in presenting something new and bold to the others. It is a challenge but very rewarding and...such fun!

I personally find working with unusual textures and found objects very satisfying. It is never a done deal! Layers upon layers can become a very exciting work of art.

—Betty Beam



## improviZations 2

Emeru .....	Tissue, chemically treated <i>National Geographic</i> paper, geode slice .....	\$200
Grey and Gray .....	Papers, ostrich feather .....	\$300
Leave it .....	Natural leaves on Yupo paper .....	\$250
The Unauthorized Version .....	Found objects: paper, metal, leather .....	\$500